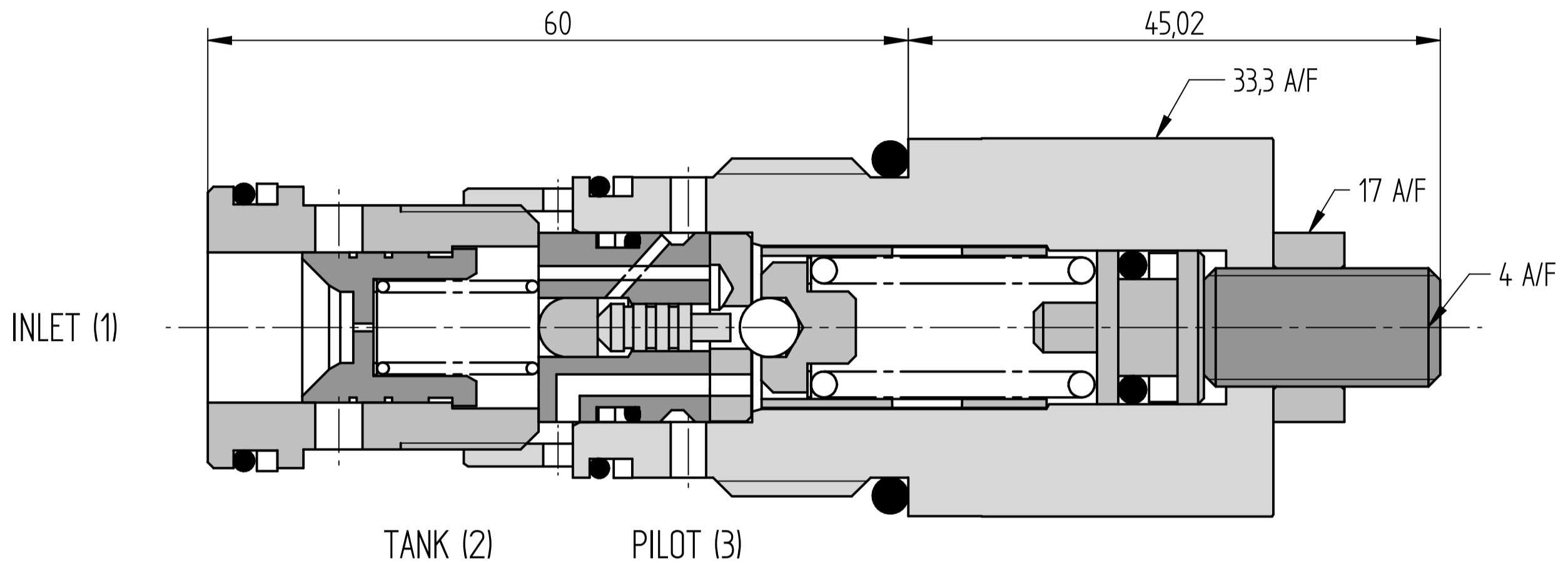
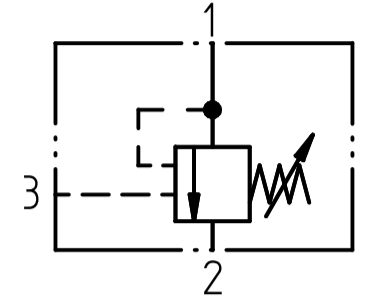


UNLOADING CARTRIDGE

FLUID POWER SYMBOL


Application

Unloading valves are used to unload the pump to tank when the pressure in a separate part of the circuit reaches a preset level. The most common application is to maintain pressure in an accumulator which may be used in an emergency to operate an essential hydraulic function.

Operation

Inlet pressure acts on Port 1 and the system pressure in port 3 acts on the pilot port of the cartridge. When the pressure rises to the valve setting, the relief section opens and the system pressure acts on the pilot piston to hold the valve in the open position. The ratio between the pilot piston and seat diameter to the relief pilot section ensures that the valve will be maintained in the fully open position until the system pressure drops to approximately 85% of the unload pressure.

Features

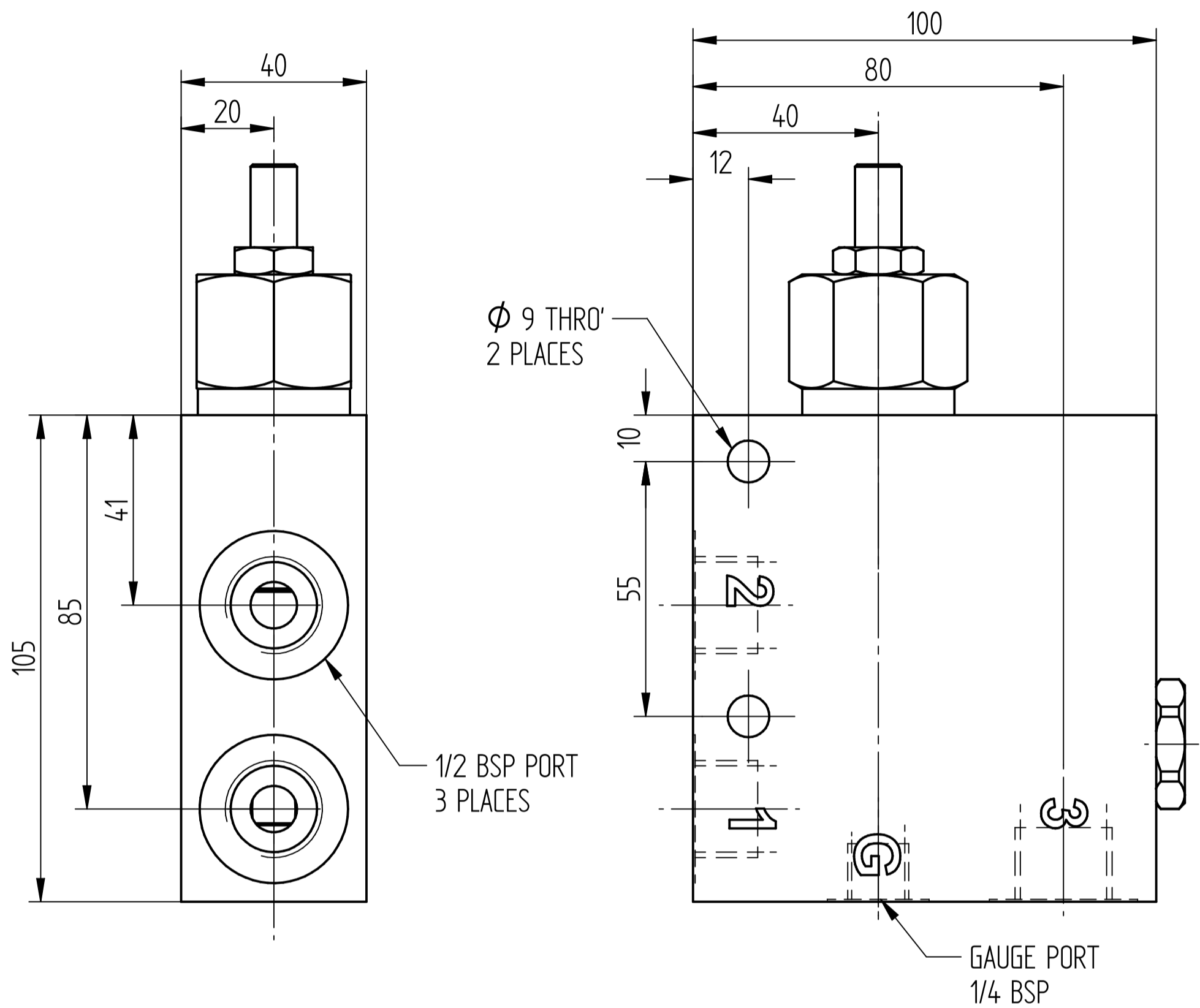
Valve bodies are supplied as line bodies for the use in accumulator circuits. These include a built in check valve which provides with an internal connection to the valve pilot port.

Specifications

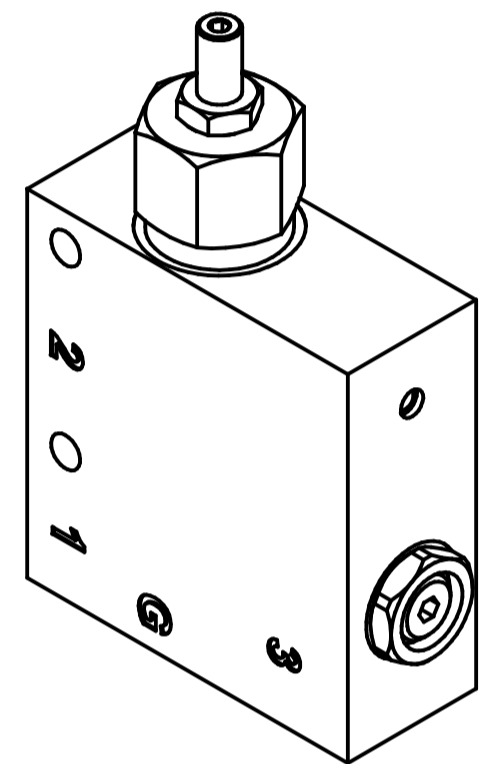
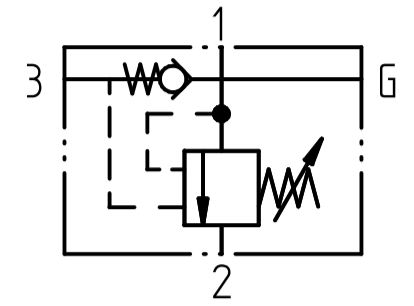
Figures based on: Oil Temp = 40°C Viscosity = 40 cSt

Rated Flow	60 litres/min
Max Pressure	350 bar
Differential Unload	10-15%
Cartridge Material	Working parts: Hardened, ground steel. External surfaces: Zinc plated
Mounting Position	Unrestricted
Cavity Number	TH3146 (Refer Cavities Section)
Torque into Cavity	75 Nm
Weight	UL65 - 0.46 Kg ULC65 4W - 0.80 Kg
Seal Kit Number	SKUL65 (Nitrile) SKUL65V (Viton)
Filtration Level	BS5540/4 Class 18/13 (25µ nominal)
Operating Temp	-20°C to +90°C (Standard Seals)
Leakage	35 millilitres/min
Viscosity Range	5 to 500 cSt

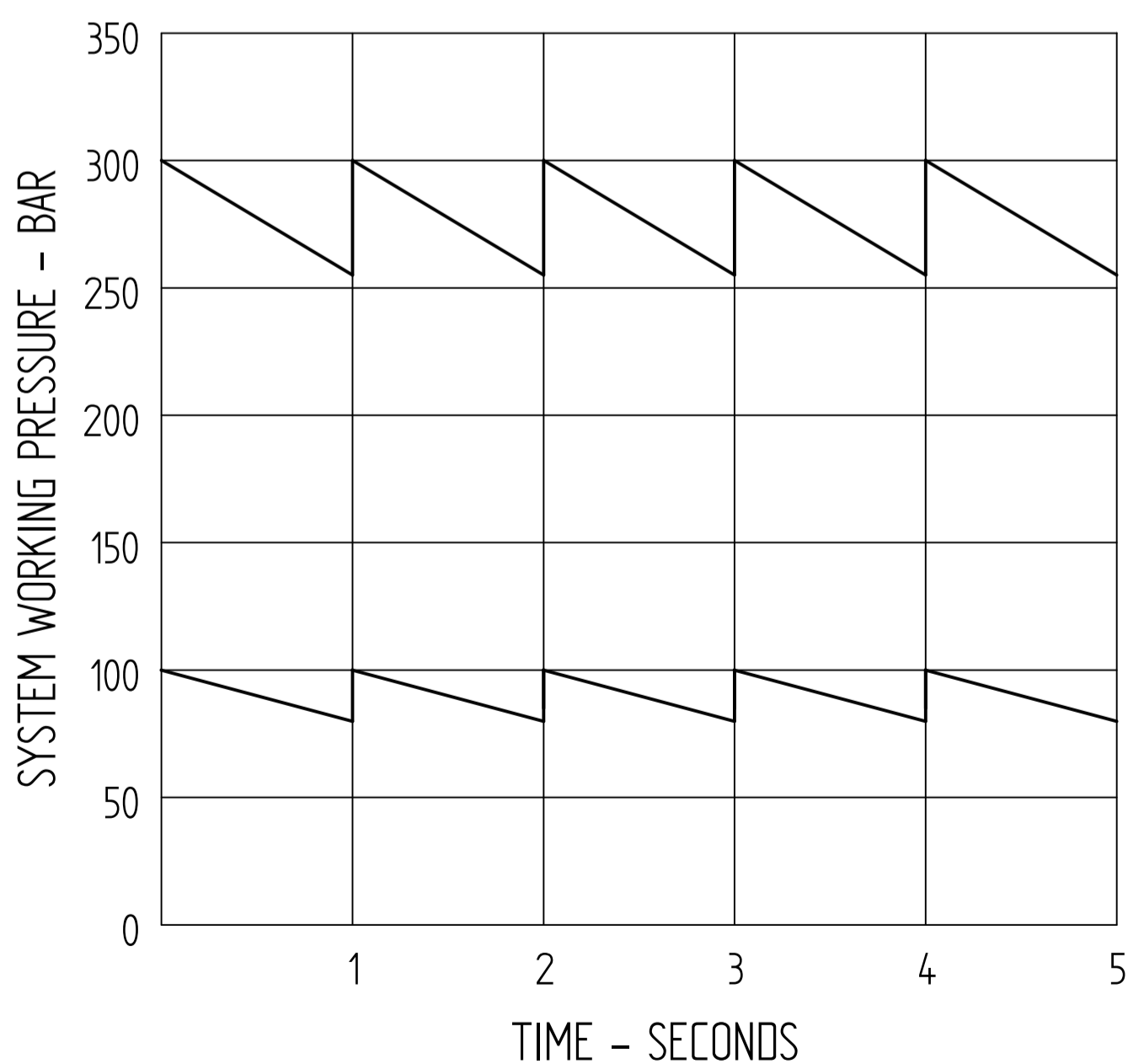
UNLOADING SYSTEM



FLUID POWER SYMBOL



Performance Curves



Specifications

Figures based on: Oil Temp = 40°C Viscosity = 40 cSt

Rated Flow	60 litres/min
Max Pressure	350 bar
Differential Unload	10-15%
Manifold Material	Aluminium (upto 250 bar) Cast Iron (above 250 bar)
Mounting Position	Unrestricted
Weight	ULC65 4W: 0.80 Kg
Operating Temp	-20°C to +90°C (Standard Seals)
Leakage	35 millilitres/min
Viscosity Range	5 to 500 cSt

UL*65 P 4W 35 N

BASIC CODE
UL65: UNLOADING CARTRIDGE
ULC65: UNLOADING SYSTEM

ADJUSTMENT
P: LEAKPROOF SCREW

PORT SIZE
4W: 1/2 BSP PORTS
OMIT FOR CARTRIDGE

SEAL KIT
N: NITRILE
V: VITON

PRESSURE RANGE
10: 40 to 100 bar
20: 70 to 210 bar
35: 150 to 350 bar