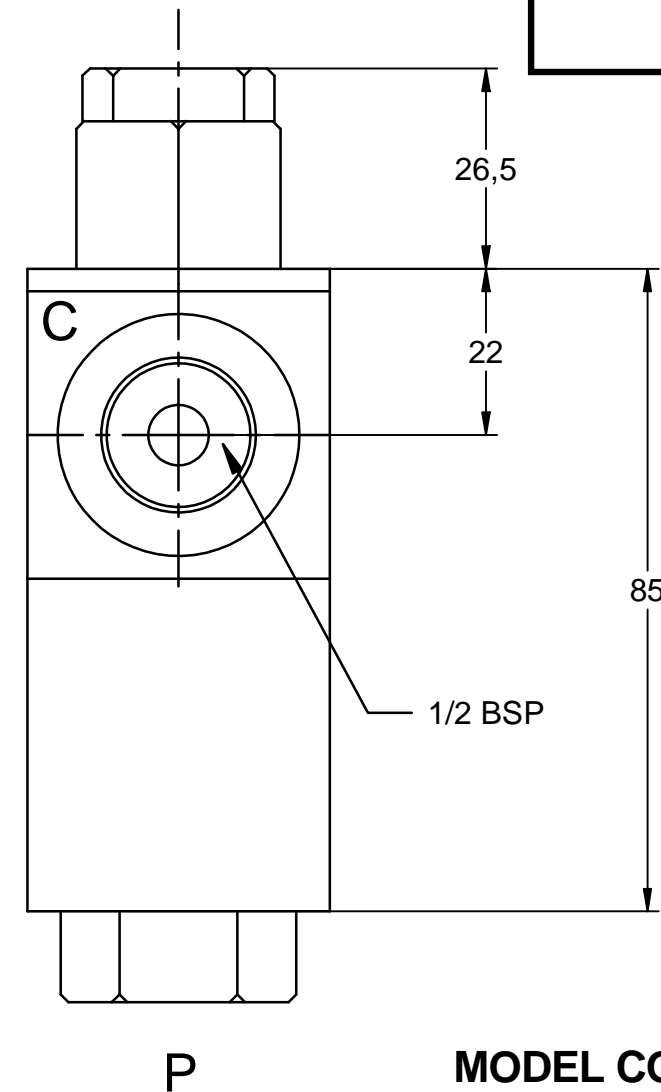
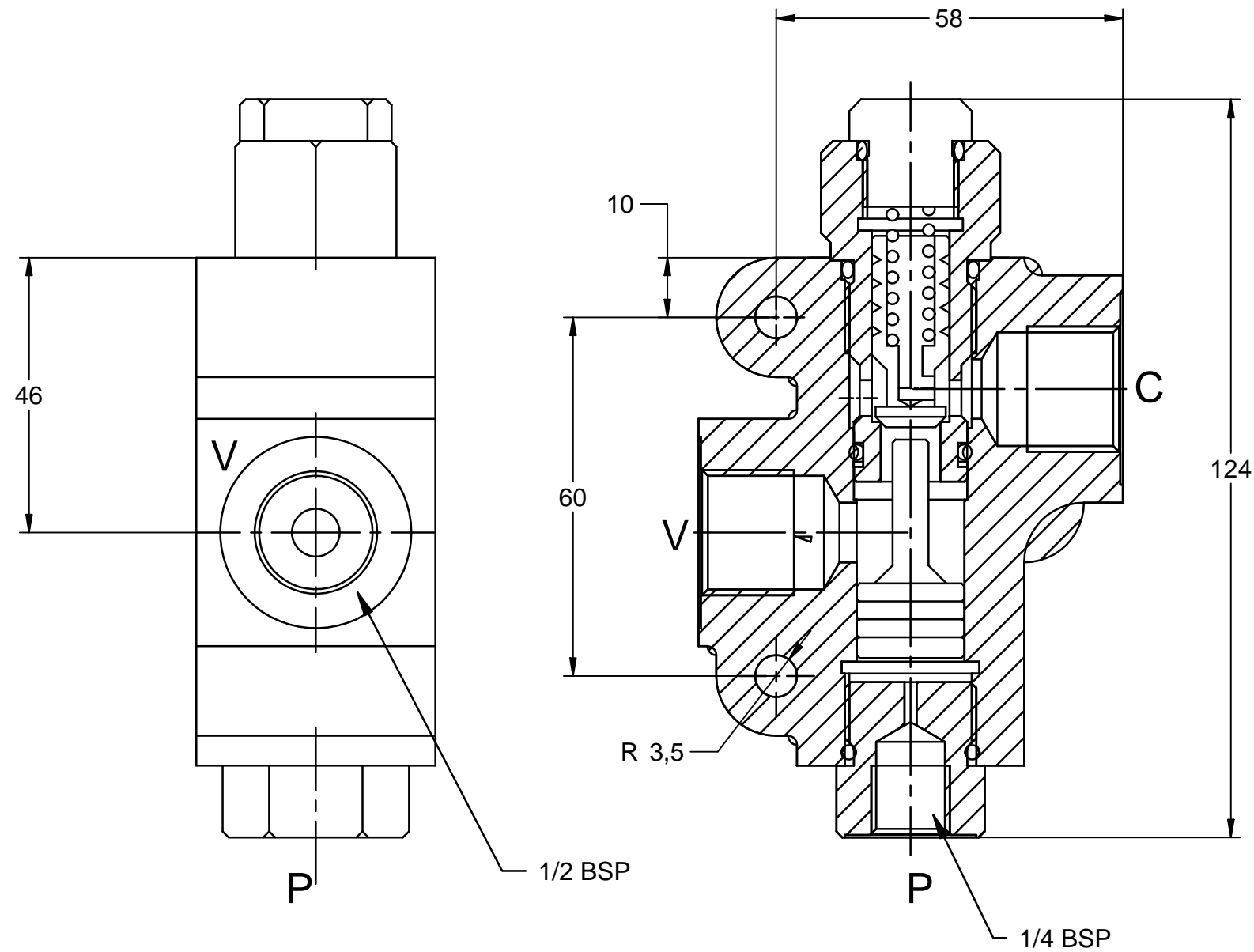
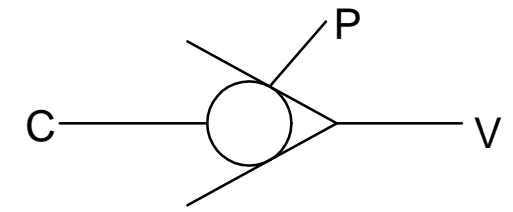


FLUID POWER SYMBOL



MODEL CODE
PC10 4W 20

VALVE WEIGHT 1.3 KG

VALVE SPECIFICATION

THIS CONSISTS OF CHECK CARTIDGE AND A SHUTTLE

MAX SERVICE PRESSURE IS 300 BAR

MAX FLOW IS 60 LPM

NITRILE SEALS ARE STANDARD

PILOT RATIO IS 3.0

VALVE CRACKING PRESSURE IS 1 BAR

MAX TEMPERATURE 80°C

PORT SIZES

C 1/2 BSP

V 1/2 BSP

P 1/4 BSP

TS003

Tucson Hydrocontrols			
C1B 246/5 GIDC Estate, Umbergaon			
Gujarat 39 6171			
DRAWN	PVD	CHKD	MJ
APRVD	PVD	DATE	
			DATA SHEET PILOT OPERATED CHECK VALVE PC10
SCALE		DATA SHEET NO	050 100