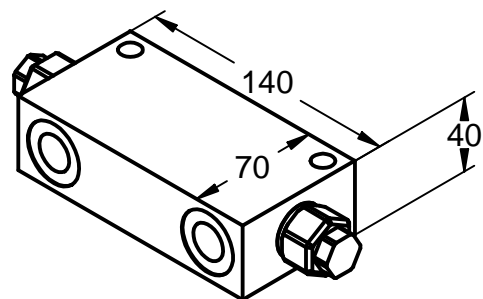


SECTION A-A

VALVE SPECIFICATION
 THIS CONSISTS OF ALLUMINIUM BODY,
 CHECK CARTRIDGE AND SHUTTLE
 MAX PRESSURE 250 BAR
 MAX FLOW 60 LPM
 NITRILE SEALS ARE STANDARD
 PILOT RATION IS 3
 VALVE CRACKING PRESSURE IS 1 BAR
 MAX TEMP 80 DEG C
 ALL PORTS ARE G 1/2 TO A7693

MODEL CODE DPC10 4W 25



VALVE WEIGHT .75 KG

Tucson Hydrocontrols
 C1B 246/5 GIDC Estate, Umbergaon
 Gujarat 39 6171

DRAWN	PVD	CHKD	MJ
APRVD	PVD	DATE	
SCALE		DATA SHEET NO	

DATA SHEET
 DPC10 4W 25

TS003

DATA SHEET NO 050 355